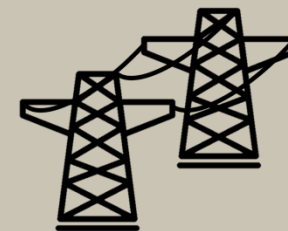




VEGCLEAR



What is IVM?

IVM, or Integrated Vegetation Management, is a strategic approach to managing vegetation for safety, aesthetics, and operational efficiency. It reduces environmental impact while meeting site-specific goals.

5 IVM Strategies Facility Managers Can Apply



Prioritize High-Risk Zones: Focus on fence lines, storage areas, access roads, and utility fixtures where overgrowth poses the most liability.



Reduce Trimming & Mowing Cycles With Bare Ground Treatments: Apply herbicides in gravel yards, retention ponds, and pavement edges to cut mechanical mowing needs and labor costs.



Plan Timely Seasonal Applications for Maximum Effectiveness: Plan treatments during active growth periods to extend results and reduce repeat applications.



Free Up Internal Crews for Higher-Value Work: Outsource vegetation control so in-house teams can focus on upgrades, inspections, operations, and mechanical maintenance.



Document and Inspect Regularly: Use site logs and routine inspections to verify results, catch regrowth early, and support compliance audits.

Benefits of IVM Integration

- **Safety:** Clear access paths and reduced fire/visibility hazards.
- **Cost Control:** Proactive maintenance lowers long-term expenses.
- **Soil and Water:** Responsible herbicide use protects environment.
- **Air Quality:** Lower reliance on two-cycle engines reduces emissions.

How VegClear Enhances IVM Plans

- **Assessment:** Site Inspection & Planning
- **Risk Evaluation:** Identify Hazards and Invasive Growth
- **Define Objectives:** Improve Access, Reduce Hazards, or Aesthetics
- **Customized Programs:** Site-Specific IVM Plan for Your Property

Industrial Vegetation Control Solutions

- **Chemical Control:** Targeted herbicide applications by licensed applicators addresses unwanted vegetation growth.
- **Reduce Mechanical Burden:** Less Mowing, cutting, and clearing work when growth is proactively controlled.
- **Labor Efficiency:** Reallocate crews from high-risk vegetation work.

Ongoing Maintenance

- **Monitoring:** Regular inspections to prevent regrowth.
- **Preventive Actions:** Early intervention in problem areas.
- **Sustainable Practices:** Balance critical site vegetation control with environmental stewardship.

Industries We Serve

- **Transportation:** Airports, Railways, and Highways.
- **Utility Corridors:** Powerlines, Pipelines, Tanks, and Substations.
- **Industrial:** Factories, Farms, Warehouses, and Storage Facilities.
- **Large Properties:** Business Parks, Schools, and Government Sites.

Next Steps

Schedule a no-cost strategy discussion or a site walk-through to see how these strategies can work at your facility.

Whether you're dealing with overgrown kudzu, industrial weed control, or commercial vegetation management, VegClear is your trusted IVM partner. With a commitment to regulatory compliance, environmental stewardship, and worker safety, VegClear delivers results that go beyond expectations. Contact VegClear today for a customized vegetation management solution that ensures safety, reliability, and environmental responsibility.